

BIG PARK COMMUNITY PLAN REVIEW

Community Plan Review Committee

Norman A. Murdock, Chairman

Tom Graham, Vice Chairman

Mel Copen, Member

Peter Gendron, Member

Henry Reiter, Member

A large, layered rock formation, possibly a mesa or butte, dominates the center of the image. The rock is reddish-brown and shows distinct horizontal strata. The top of the formation is jagged and craggy. The foreground is a flat, arid landscape with sparse, dry vegetation and a few small trees. The sky is a clear, pale blue with a few wispy clouds on the right side.

One vision created by the entire community

**The magnificence of nature that
surrounds us should
set the standard
for everything
we do!**

BIG PARK – THE VILLAGE

What is Big Park?
Where is Big Park?

6,200+ people

34,465 Acres





NATIONAL FOREST	30,470
RED ROCK STATE PARK	195
PRIVATE	3,800

BIG PARK COMMUNITY PLAN FUTURE LAND USE PATTERNS


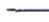

Land Use Designations

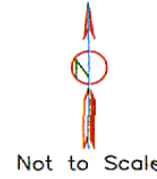
Single Family Residential

Indicates Rural Area Boundaries

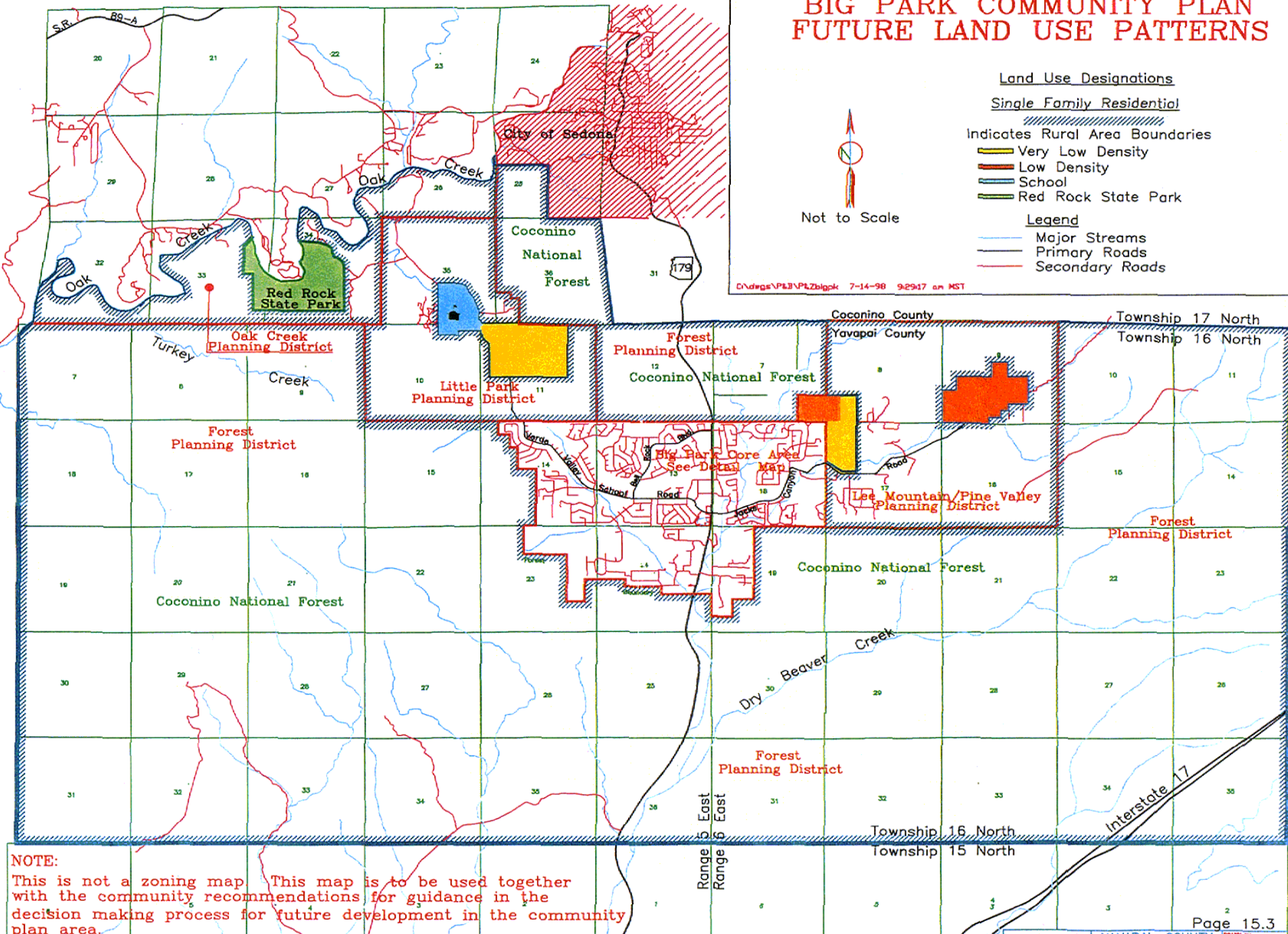
-  Very Low Density
-  Low Density
-  School
-  Red Rock State Park

Legend

-  Major Streams
-  Primary Roads
-  Secondary Roads



C:\ndegs\PE\B\PLZbigpk 7-14-98 9:29:17 am MST



NOTE:
This is not a zoning map. This map is to be used together with the community recommendations for guidance in the decision making process for future development in the community plan area.

BIG PARK – THE VILLAGE

What is the Big Park Coordinating Council?

- Organized in 1996; entirely volunteer
- Meets monthly
- Represents the Big Park area:
 - 27 Property Owner Associations,
Businesses, Neighborhoods
- Speaks for the community before Yavapai County on all aspects of community life and business including:
 - Zoning issues; Transportation/Roads;
Recreation/Youth Activities

WHAT IS A COMMUNITY PLAN?

GUIDE TO FUTURE GROWTH

- LAST PLAN WRITTEN IN 1998
- PLAN REVIEW COMMITTEE CREATED, OCTOBER, 2008
- CHAIRMAN, VICE CHAIRMAN, 3 ADDITIONAL MEMBERS

ORGANIZING AND PLANNING

REVIEW AND UPDATE 1998 PLAN

WHERE WE ARE – WANT TO GO AND BE

THE 2009 PLAN

MISSION STATEMENT

To update the Plan and help guide future growth of the Community in a manner that will maintain and enhance a safe and secure quality of life for Community residents, businesses and workers and foster a vibrant and stimulating economic, social and cultural environment by:

MISSION STATEMENT (cont.)

1. Identifying major changes that have occurred and their likely impact on future
2. Examining unfulfilled elements of the plan
3. Reviewing residential aspects to see if any changes are necessary
4. Creating a dynamic updated plan, particularly along the 179 corridor
5. Building a community identity
6. Addressing any security issues
7. Coordinating with all stakeholders & obtaining broad community involvement

PLAN REVIEW COMMITTEE PROCESS

SEVEN SUBCOMMITTEES AND CHAIRMEN

1. LAND USE – HENRY REITER
2. TRANSPORTATION – TOM GRAHAM
3. UTILITIES & ENERGY – PETER GENDRON
4. ENVIRONMENTAL ISSUES – PETER GENDRON
5. PARKS/RECREATION/SCHOOLS – MEL COPEN
6. COMMUNITY IDENTIFICATION AND PROMOTION – MEL COPEN
7. HEALTH AND PUBLIC SAFETY – NORM MURDOCK

PROCESS (CONT.)

- FOUR SCHEDULED PUBLIC MEETINGS TO INFORM THE COMMUNITY OF THE EFFORT AND OBTAIN INVOLVEMENT
- THE WORKING SEVEN SUBCOMMITTEES – MEETINGS
- REVIEW OF COMMUNITY INPUT, DATA, INFORMATION, 1998 PLAN , ETC.
- WRITING THE PLAN
- SUBMITTING PLAN TO BIG PARK COUNCIL
- SUBMITTING PLAN TO YAVAPAI COUNTY AND SUPERVISORS
- PUBLISHING APPROVED PLAN
- PROCESS TO BE COMPLETED IN 2009

Interested in Volunteering?

go to: www.bigparkcouncil.org

Click on the *Get Involved* tab

Click on the word **Volunteer** or send an E-mail to:

Volunteer@BigParkCouncil.org

or Call Norm Murdock 284-5390

Community Survey will be posted on the Big Park Council website in April

Discussion

